



AS7341

a002\_CSS AquaSense

a002fa\_CSS AquaSense ONYX Base.PcbDoc

Variant ONYX L1IG

AS7341    a002\_CSS AquaSense    a002fa\_CSS AquaSense ONYX Base.PcbDoc



Table of Contents

Sheet 1: a002fa0\_CSS AquaSense ONYX Base\_Title Page

Sheet 2: a002fa0\_CSS AquaSense ONYX Base\_Project Page (This page)

Sheet 3: a002fa0\_CSS AquaSense ONYX Base\_scm\_01

Sheet 4:

Sheet 5:

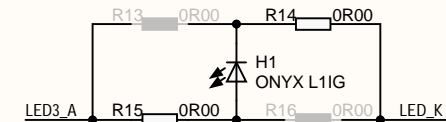
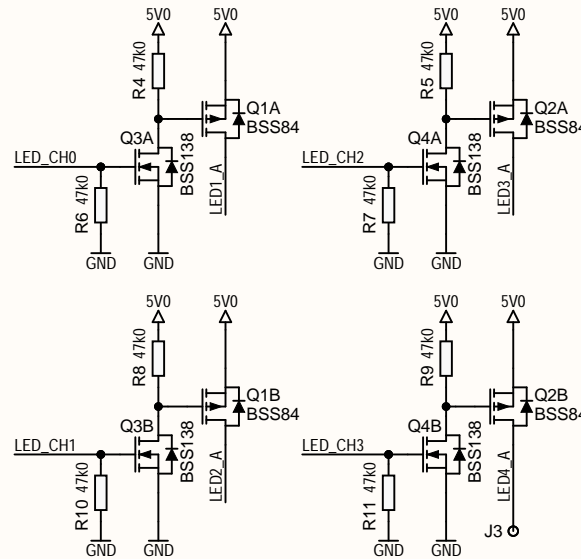
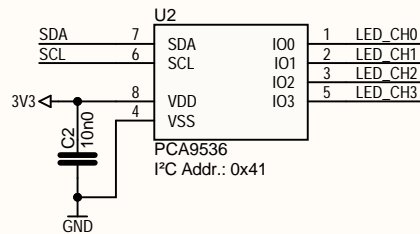
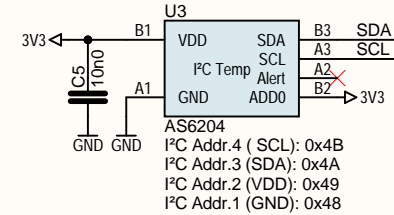
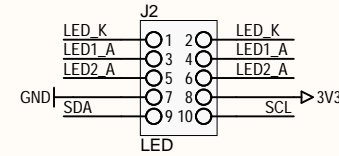
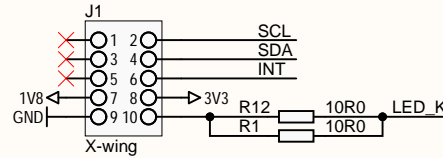
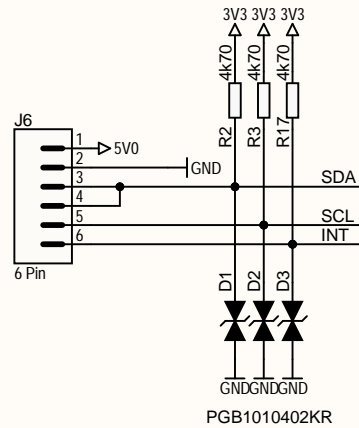
Sheet 6:

Sheet 7:

Sheet 8:

Revision History

Rev1.0.0: Initial Release	Release Date: 16/07/2020
---------------------------	--------------------------



Confidential © ams AG

Product: AS7341

Variant ONYX L11G

PCB Name: a002fa\_CSS AquaSense ONYX Base.PcbDoc

Rev 1.0.0

Application Engineer: FHAE

Release Date: 16/07/2020

Sheet Name: a002fa0\_CSS AquaSense ONYX Base\_scm\_01.SchDoc

Page Size: A4

Last Save Date / Time: 21.07.2020 / 12:44:43

Project: a002\_CSS AquaSense

Sheet 9 of 9



AS7341

a002\_CSS AquaSense

a002fa\_CSS AquaSense ONYX Base.PcbDoc

Variant SFH4776

AS7341    a002\_CSS AquaSense    a002fa\_CSS AquaSense ONYX Base.PcbDoc



Table of Contents

Sheet 1: a002fa0\_CSS AquaSense ONYX Base\_Title Page

Sheet 2: a002fa0\_CSS AquaSense ONYX Base\_Project Page (This page)

Sheet 3: a002fa0\_CSS AquaSense ONYX Base\_scm\_01

Sheet 4:

Sheet 5:

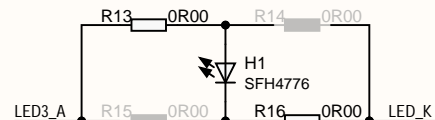
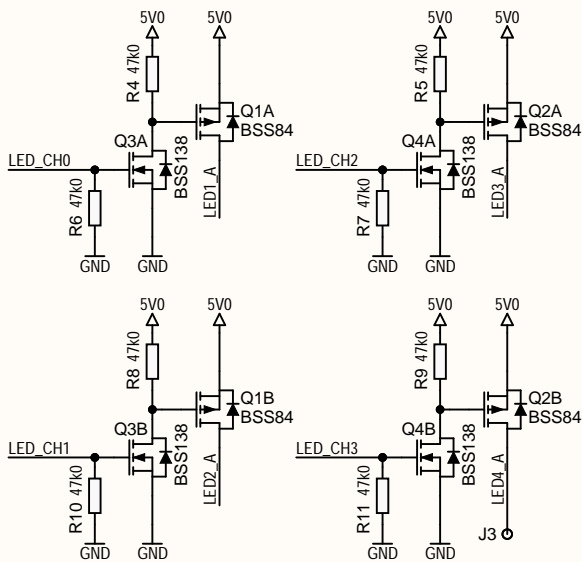
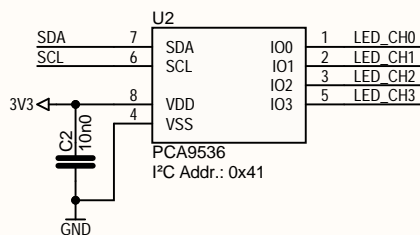
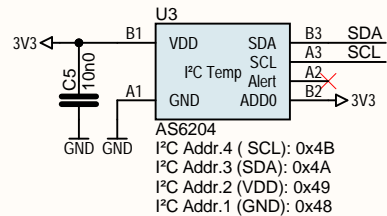
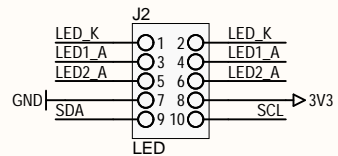
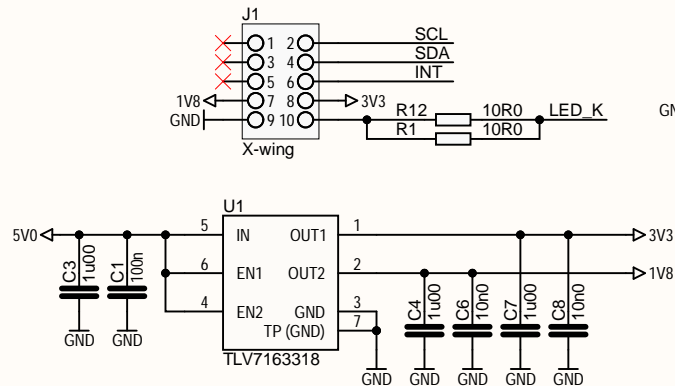
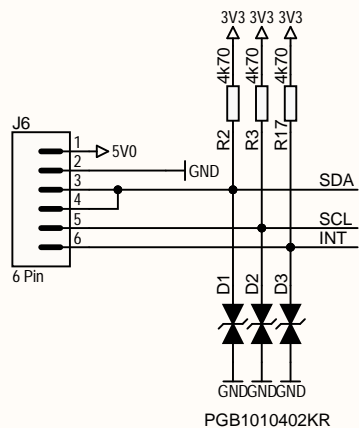
Sheet 6:

Sheet 7:

Sheet 8:

Revision History

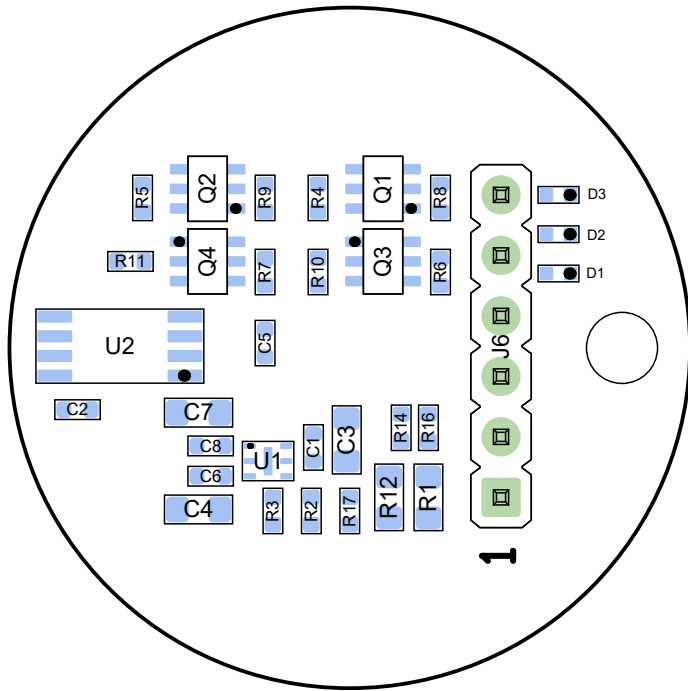
Rev1.0.0: Initial Release	Release Date: 16/07/2020
---------------------------	--------------------------



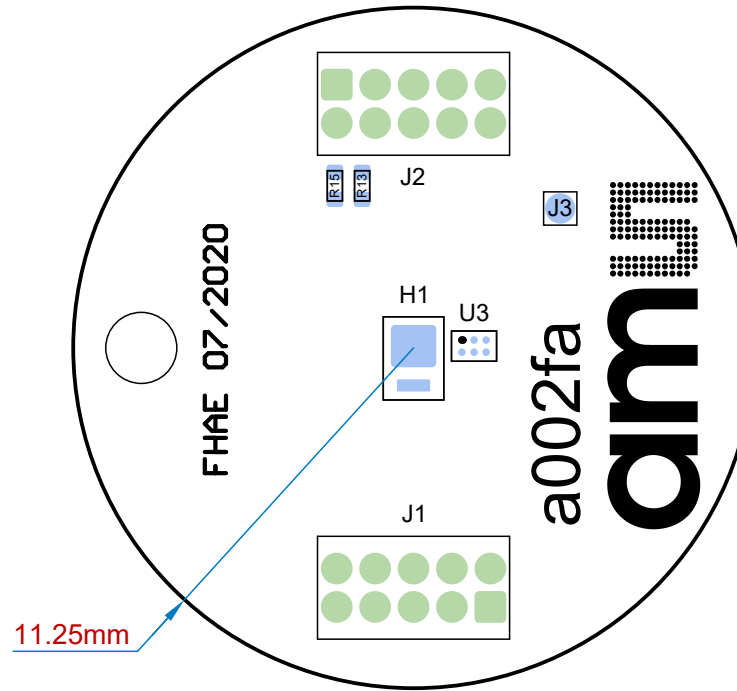
Confidential © ams AG

Product: AS7341 Variant SFH4776  
PCB Name: a002fa\_CSS AquaSense ONYX Base.PcbDoc Rev 1.0.0  
Application Engineer: FHAE Release Date: 16/07/2020  
Sheet Name: a002fa0\_CSS AquaSense ONYX Base\_scm\_01.SchDoc  
Page Size: A4 Last Save Date / Time: 21.07.2020 / 12:44:44  
Project: a002\_CSS AquaSense Sheet 9 of 9

View from Bottom side (Scale 4:1)



View from Top side (Scale 4:1)



- ① 1.0mm  $\pm 10\%$  4-Layer FR4 (MLL4)
- ② manufactured with IPC Claas 2
- ③ Technology: 150 $\mu$ m TrackWith/  
TrackTrack  
smallest drill: 150 $\mu$ m
- ④ Prepreg and Core Thickness is free  
to defined
- ⑤ outline is milled and v-cutted
- ⑥ finished surface is ENIG
- ⑦ Silkscreen color is white and made  
in high resoluion (more than 200 $\mu$ m)
- ⑧ Solder Mask color is black
- ⑨ check Gerber files against the IPC-  
D-356A.ipc netlist file
- ⑩ Questions to:  
ams Sensors Germany GmbH  
Fernando Hädrich  
e-mail:  
fernando.haedrich@ams.com  
Phone: +49 3641 280935

Drill Table

Symbol	Count	Hole Size	Plated	Hole Tolerance
□	42	0.15mm	Plated	
○	20	0.70mm	Plated	
⊕	6	0.80mm	Plated	
⊗	1	2.40mm	Non-Plated	
	69 Total			



Confidential © ams AG

Product: AS7341

[No Variations]

PCB Name: a002fa\_CSS AquaSense ONYX Base.PcbDoc

Rev 1.0.0

Application Engineer: FHAE

Release Date: 16/07/2020

Sheet Name: a002fa0\_CSS AquaSense ONYX Base.PCBDwf

Page Size: A4

Last Save Date / Time: 21.07.2020 / 12:44

Doc. Scale:

Project: a002\_CSS AquaSense

Sheet 1 of 1

1:1  
Millimeters

FHAE 07/2020

Top Silk



H1

.

U3

J2

a002fa

adm



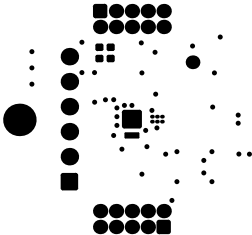
# Top Paste



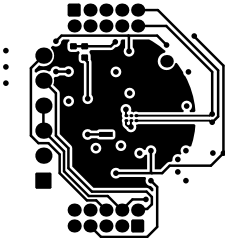
.



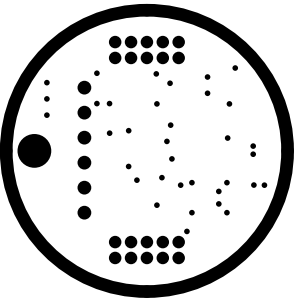
# Top Solder



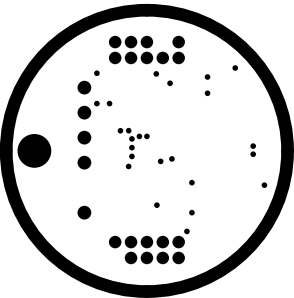
Top Layer



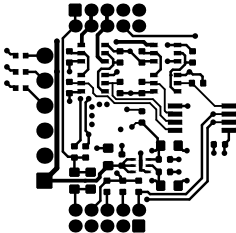
Neg Plane Inner 1



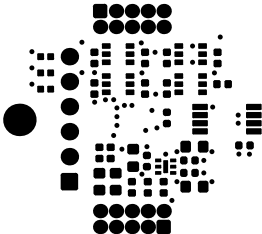
Neg Plane Inner 2



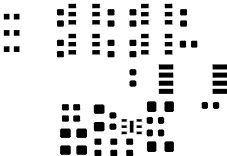
Bottom Layer



# Bottom Solder



# Bottom Paste





## Bottom Silk

1  
at

## Board outline

